

Independent Supportive Housing Oakland II

Scattered Site Single Family Homes

Ferndale & Hazel Park, Michigan



FUSCO, SHAFFER & PAPPAS, INC.
ARCHITECTS AND PLANNERS

Single Family Living - Supportive Housing

Size: 2,160 SF / Home
4 Homes
2 Stories
Cost: \$1,066,000
\$123 / SF
Owner: Community Housing Network, Inc.
Financing: HUD

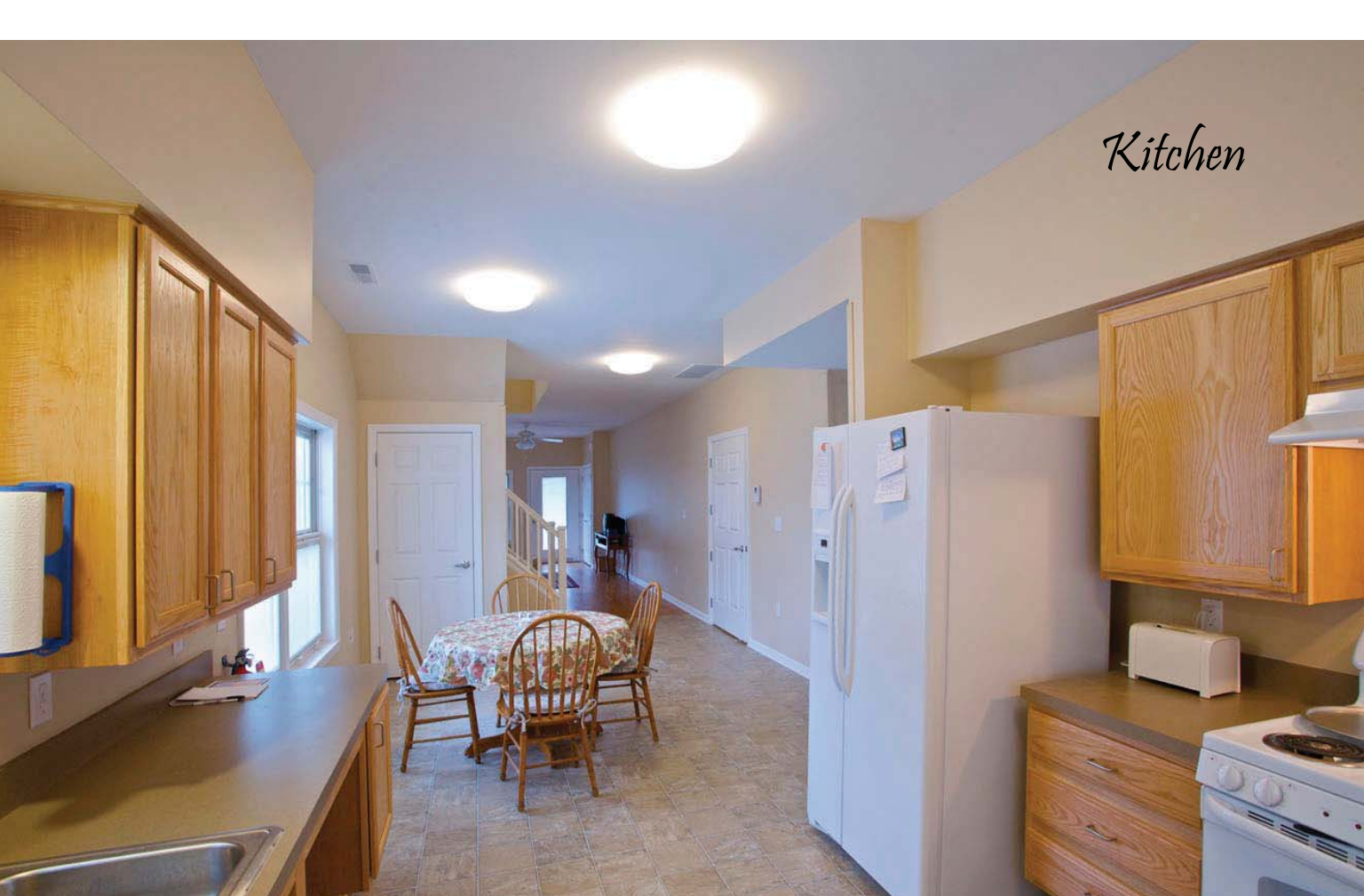
Exterior Facade



Living Room



Kitchen



Exterior Facade



Independent Supportive Housing Oakland II

Owner
Community Housing Network, Troy, MI

Civil Engineer
Zeimet-Wozniak Associates, Inc., New Hudson, MI

Mechanical Engineer
Sellinger Associates, Inc., Livonia, MI

General Contractor
O'Brien Construction Company, Inc., Pontiac, MI

Architect
Fusco, Shaffer & Pappas, Inc., Farmington Hills, MI

Structural Engineer
JCA Engineering, Inc., Plymouth, MI

Electrical Engineer
ETS Engineering, Inc., Royal Oak, MI

Photographer
Christopher Lark, Inc., Berkley, MI

