

RENOVATION OF HAMILTON CROSSING

Ypsilanti, Michigan



FUSCO, SHAFFER & PAPPAS, INC.
ARCHITECTS AND PLANNERS

Multi-Family Living
Renovation & Addition

MSHDA - Green Community/New Urbanism

Size: 125,100 SF Total
111,200 SF Renovation
13,900 SF New Construction

2 Stories
144 Units

Construction Cost: \$10,298,500
\$ 67/SF Renovation
\$108/SF New Construction

Owner: Hamilton Crossing LSHDA Phase 1 Limited Partnership / Revision Phase 2 Limited Partnership
Developer: Ypsilanti Housing Commission / Chesapeake Community Advisors, Inc.
Completion Date: Expected April 2013
Financing: MSHDA & HUD

Before



Renovated Building



Renovated Building



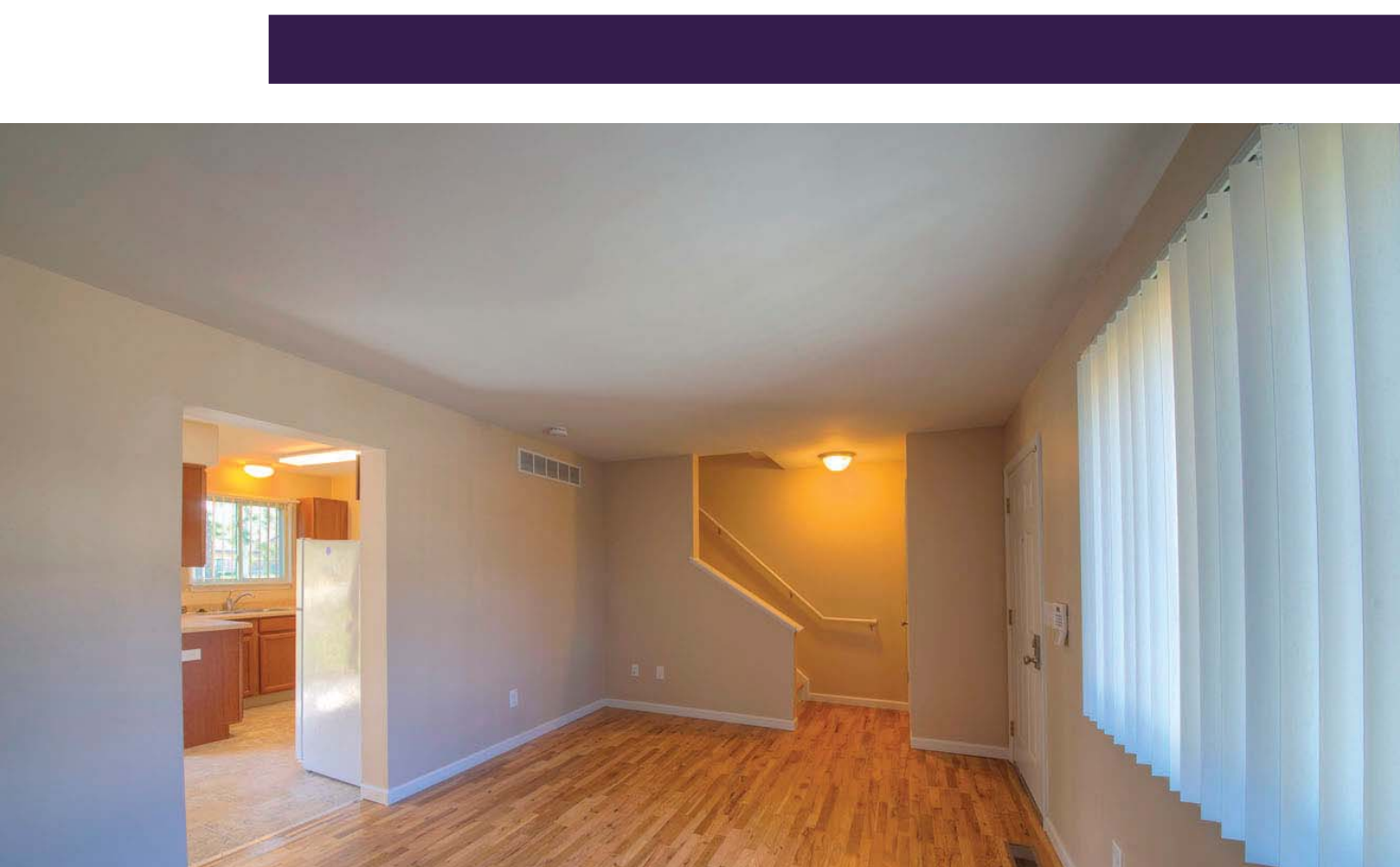
New Construction



New Construction



Living Room



RENOVATION OF HAMILTON CROSSING

OWNER

Hamilton Crossing LSHDA Phase 1 Limited Partnership / Revision Phase 2 Limited Partnership

DEVELOPER

Ypsilanti Housing Commission / Chesapeake Community Advisors, Inc.

ARCHITECT

Fusco, Shaffer & Pappas, Inc., Farmington Hills, MI

CIVIL ENGINEER

Giffels-Webster, Washington Township, MI

LANDSCAPE ARCHITECT

Kenneth Weikal Landscape Architecture, Farmington Hills, MI

GENERAL CONTRACTOR

Rohde Construction Company, Inc., Kentwood, MI

MECHANICAL ENGINEER

MLS Engineers, LLC, Bloomfield Hills, MI

ELECTRICAL ENGINEER

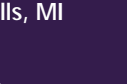
ETS Engineering, Inc., Royal Oak, MI

STRUCTURAL ENGINEER

JCA Engineering, Inc., Plymouth, MI

PHOTOGRAPHER

Christopher Lark, Inc., Milford, MI



www.fuscoshafferpappas.com